

SUPER SPORTS 3X

Customizer

User Guide

Important Operating Advice

Please refer to 'Connecting the Super Sports 3X' section of this user guide for the required connection steps. Failure to correctly connect the Super Sports 3X will result in the none detection of the wheel when attempting to use the Super Sports 3X Customizer feature. Assign the default button remapping, rumble, wheel sensitivity and pedal pressure at any time by selecting the 'Reset Layout' button.

Introduction

The Super Sports 3X™ is fully customizable using the Super Sports 3X™ Customizer. The Super Sports 3X™ Customizer allows you to remap the button layout for either the Xbox 360® or PS3® operating mode. You can set the level of rumble, adjust the sensitivity of the wheel and set the pedal pressure. This fantastic feature gives you ultimate control over the Super Sports 3X™ and best of all it is completely free to download.

Running the Super Sports 3X Customizer


Download the Super Sports 3X Customizer from the support section of Dattel's website www.codejunkies.com. The Super Sports 3X Customizer does not need to be installed, simply double click the downloaded 'SuperSports3X.exe' file to run it.

Overview





The screenshot shows the Super Sports 3X Customizer interface. It features a top navigation bar with tabs for 'Remap', 'Sensitivity', and 'Presets'. The main area is divided into two sections: a left section for button remapping and a right section for wheel and pedal settings. The button remapping section shows a virtual gamepad with buttons labeled X, Y, B, A, RT, LT, LB, and RB. The wheel and pedal settings section includes a 'Buttons' section with 'drag and drop button' and 'Assign' options, a 'Rumble' section with 'Off', 'Medium', and 'High' options, and a 'Pedals' section with a 'Set pedal pressure' slider. The 'SUPER SPORTS 3X' logo is visible in the bottom right corner.


 Button Remap Tab


 Wheel Sensitivity Tab


 Presets Tab

 D-pad Up, Down, Left and Right

 Right Analogue stick Up, Down, Left and Right

 Xbox 360 Left and Right analogue click buttons

 **Steering boost** Allows you to double the rotation to which the wheel is set

 These buttons represent full lock left and full lock right. When pressed apply full lock left or right while holding the wheel at any position

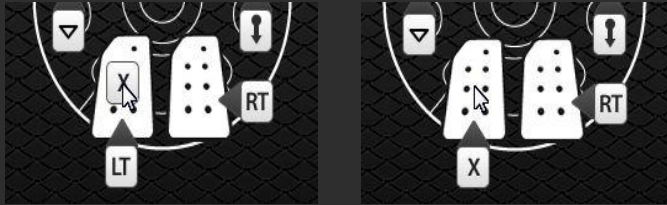
Connecting the Super Sports 3X

Ensure that you are running the Super Sports 3X Customizer, press and hold the buttons 'Start' and 'Select' located in centre of the wheel and connect the USB cable located on the rear of the Super Sports 3X to your computer. When connected windows will automatically install the necessary drivers.

If the Super Sports 3X is not correctly connected the screen will remain grey prompting the connection of the Super Sports 3X. With the Super Sports 3X correctly connected use the following sections to begin customizing. Once you have finished customizing disconnect the USB cable from your computer.

Button Remapping

Buttons drag and drop button



Button remapping gives you the ultimate control over the Sport Sports 3X layout by allowing you to choose which buttons should be pressed to activate each control.

Firstly select the 'Button Remap Tab' to enter the button remap screen and select either the 'Xbox 360' button or the 'PS3' button. Next drag and drop the button that you would like to assign from under the 'Buttons' section to the control of your choice. Repeat the same procedure for any other buttons you would like to remap. When you have finished remapping your buttons, select the 'Assign Settings' button to assign the remap to the Super Sports 3X.

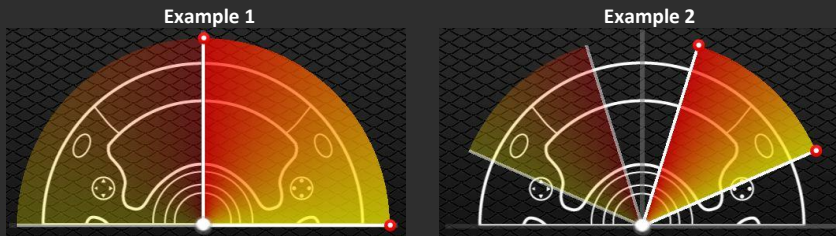
Hint: When reconnected to your games system the Super Sports 3X will default to the operating mode which you last configured unless the mode is changed by pressing and holding the 'Mode' button when connected.

Rumble

Rumble Off Medium High

The Rumble setting allows you to set the level of rumble which you feel during gaming. To do this, select either the 'Button Remap Tab' or the 'Wheel Sensitivity Tab' to enter either section. Next set the level of rumble to either 'Off', 'Medium' or 'High' by selecting the relevant button. When you have finished making your selection, select the 'Assign Setting' button to assign your changes to the Super Sports 3X.

Wheel Sensitivity



Wheel sensitivity allows you to remove inactive zones and increase the wheel sensitivity by decreasing the size of the active zone. Depending on the game which you are playing a small degree of turn will be classed as being within an inactive zone. The use of an inactive zone allows for very slight movements of a wheel or analogue stick without movement being applied in-game. Decreasing the size of the active zone allows you to reduce the distance which the wheel needs to travel in order to apply full lock.

In 'Example 1' being the default layout neither the removal of an inactive zone and the decreasing of the active zone are applied. In 'Example 2' the removal of an inactive zone and the decreasing of the active zone have been applied.

To remove an inactive zone or to decrease the active zone you need to set the position of the red markers. To do this, select the 'Wheel Sensitivity Tab' to enter the wheel sensitivity screen. To remove an inactive zone drag the top red marker downwards the equivalent distance of the inactive zone for the game which you are playing. The actual size of an inactive zone will vary between games and the example given is only for reference. Decrease the size of the active zone by moving the bottom red marker upwards to the desired position. Once you have set the red markers to the desired positions, select the 'Assign Setting' button to assign your changes to the Super Sports 3X. When moving either of the red markers the same adjustments are applied to both sides of the wheel.

Hint: If you set the top red marker too far downwards, a small degree of turn may apply full lock.

Pedal Pressure

Pedal pressure allows you to increase and decrease the pressure of the pedals. Depending on the game which you are playing if the pedal pressure is set too high you may find that when applying the lowest amount of pressure to the accelerator pedal will cause full speed to be applied instead of a much lower speed. By reducing the pedal pressure, when applying the lowest amount of pressure to the accelerator pedal, a much lower speed will be applied.

To increase and decrease the pressure of the pedals you will need to set the pedals slider. To do this, select either the 'Button Remap Tab' or the 'Wheel Sensitivity Tab' to enter either section. Next set the pedal pressure by moving the slider right to increase or left to decrease. Once you have set the slider to the desired position, select the 'Assign Setting' button to assign your changes to the Super Sports 3X.

Presets

The Super Sports 3X Customizer allows you to download a whole host of presets specifically designed for certain PS3 and Xbox 360 games. The presets include the best suited button mapping, wheel sensitivity and pedal pressure setup.

To browse the available presets and assign a preset to your Super Sports 3X, firstly select the 'Presets Tab' to enter the presets screen. Select a game from the list to view information about the selected preset. If you would like to assign the selected preset select the 'OK' button, to cancel and exit the presets screen select the 'Cancel Button'.

Technical Support and Customer Services

Datel Customer Services Europe

Customers Services,
Datel Design & Development Ltd
Stafford Road, Stone, STAFFS, ST15 0DG,
UNITED KINGDOM

Email: support@datel.co.uk
Web: <http://uk.codejunkies.com>

Datel Customer Services USA

ATTN: Customer Services, Datel Design & Development
Inc, 33 North Garden Avenue, Suite 900, Clearwater, FL
33755, UNITED STATES

Email: support@dateldesign.com
Knowledgebase: <http://www.datelcustomerservice.com>
Web: <http://us.codejunkies.com>

©2010 Datel Design & Development Ltd. *Super Sports 3X* is a trademark of Datel Design and Development Ltd.

Xbox 360 is a registered trademark or trademark of MICROSOFT in the United States and/or other countries. SONY PS3 is a registered trademark or trademark of Sony Computer Entertainment Inc. Super Sports 3X is a 100% unofficial product and is NOT sponsored, endorsed or approved by MICROSOFT, SONY nor any games developer or publisher.